

# **The Edwards Lifesciences Mitral & Tricuspid Surgical Repair Portfolio**



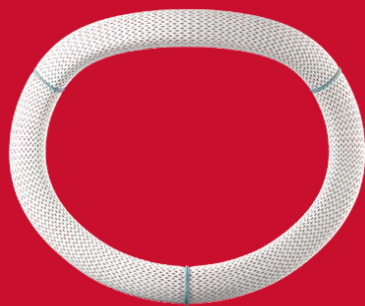
Edwards

## Edwards Lifesciences Mitral and Tricuspid Surgical Repair Portfolio

- **Carpentier-Edwards Physio II Annuloplasty Ring**
- **Carpentier-Edwards Physio Annuloplasty Ring**
- **Physio Flex Annuloplasty Ring**
- **Carpentier-McCarthy-Adams IMR ETlogix Annuloplasty Ring**
- **Cosgrove-Edwards Annuloplasty System**
- **Carpentier-Edwards Physio Tricuspid Annuloplasty Ring**
- **Edwards MC3 Tricuspid Annuloplasty Ring**

# **Carpentier-Edwards Physio II**

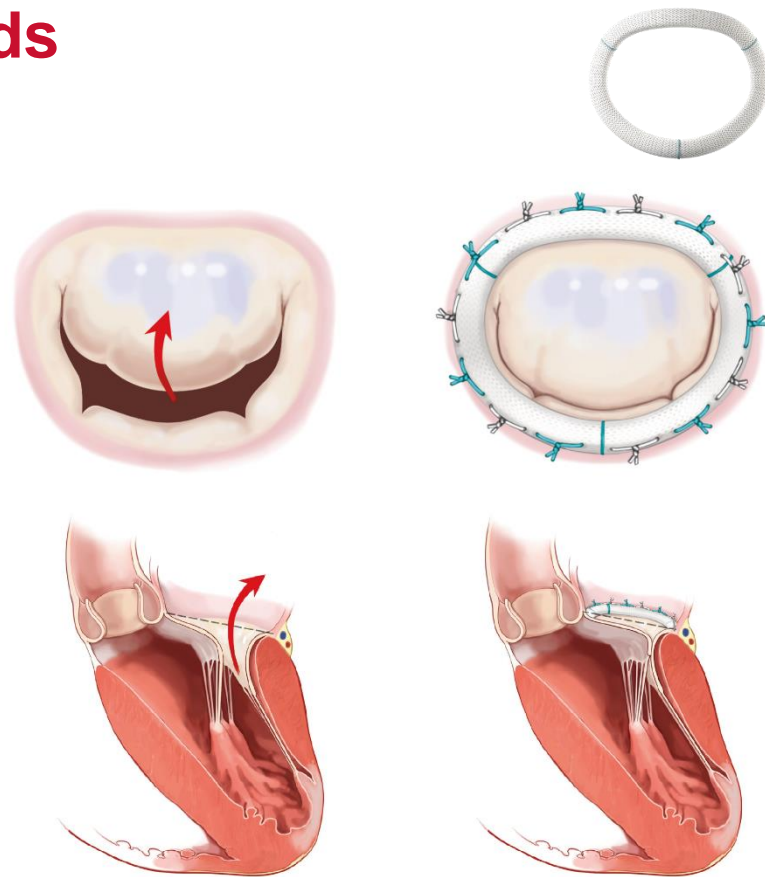
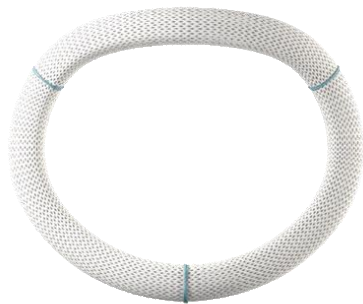
Annuloplasty Ring



Edwards

# Introducing Carpentier-Edwards Physio II Annuloplasty Ring

- **When:**  
You want a semi-rigid, complete ring



Procedure illustration adapted from Carpentier, et al. Elsevier, 2010

# Introducing Carpentier-Edwards Physio II Annuloplasty Ring



## Shape



Complete ring with an anterior saddle and smaller posterior saddle



28 mm



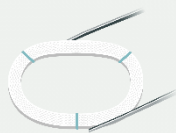
38 mm

Evolves from D-Shape to more circular\*

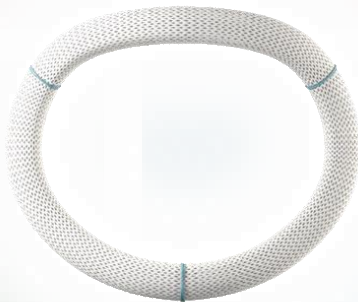
## Flexibility



Anterior rigidity



Posterior flexibility



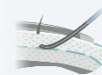
## Implantability



Commissure and mid-posterior markers



Single-cut release, angled holder



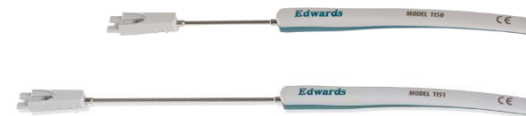
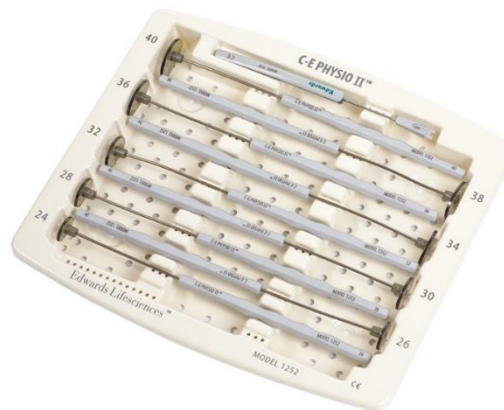
Dedicated sewing cuff and identified suture zone

\* Illustrative depiction of sizes 28 mm and 38 mm

# Carpentier-Edwards Physio II Annuloplasty Ring

## Model Numbers & Compatible Accessories

Model Number	Compatible Sizers / Tray <sup>*,**</sup>	Handles <sup>*,**</sup>
Model 5200, available in even sizes 24 mm - 40 mm	Sizer 1252/ Tray 1252	Reusable Bendable Handle 1150 Reusable Extended Handle 1151



\* **Caution:** Examine sizers and handles for signs of wear, such as dullness, cracking or crazing. Replace sizer and handles if any deterioration is observed

\*\* Refer to the accessories IFU (sizers, trays and handles) for Cleaning Instructions and Sterilization Instructions

# **Carpentier-Edwards Physio**

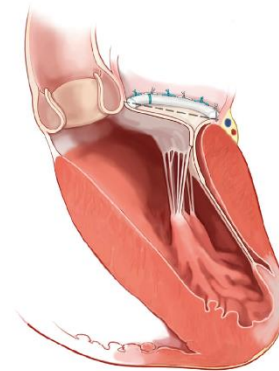
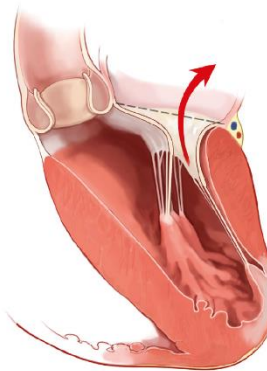
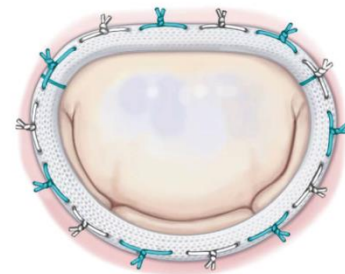
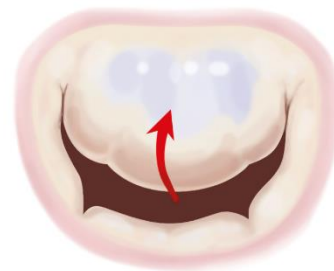
Annuloplasty Ring



Edwards

# Introducing Carpentier-Edwards Physio Annuloplasty Ring

- **When:**  
You want a semi-rigid, complete ring

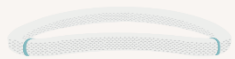




# Introducing Carpentier-Edwards Physio Annuloplasty Ring



## Shape

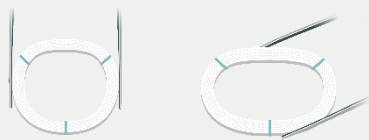


Anterior saddle shape for apposition of the aortic root



Conforms to the configuration of a normal mitral annulus

## Flexibility



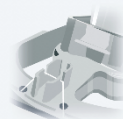
Increased posterior flexibility



## Implantability



Two transverse Commissure markers



Three-cut release holder

# Carpentier-Edwards Physio Annuloplasty Ring Model Numbers & Compatible Accessories

Model Number	Compatible Sizers / Tray <sup>*,**</sup>	Handles <sup>*,**</sup>
Model 4450, available in even sizes 24 mm - 40 mm	Sizer 1174/ Tray 1174	Reusable Bendable Handle 1150 Reusable sizer handle 1111

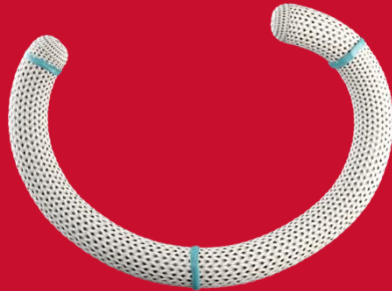


\* **Caution:** Examine sizers and handles for signs of wear, such as dullness, cracking or crazing. Replace sizer and handles if any deterioration is observed

\*\* Refer to the accessories IFU (sizers, trays and handles) for Cleaning Instructions and Sterilization Instructions

# Physio Flex

## Annuloplasty Ring



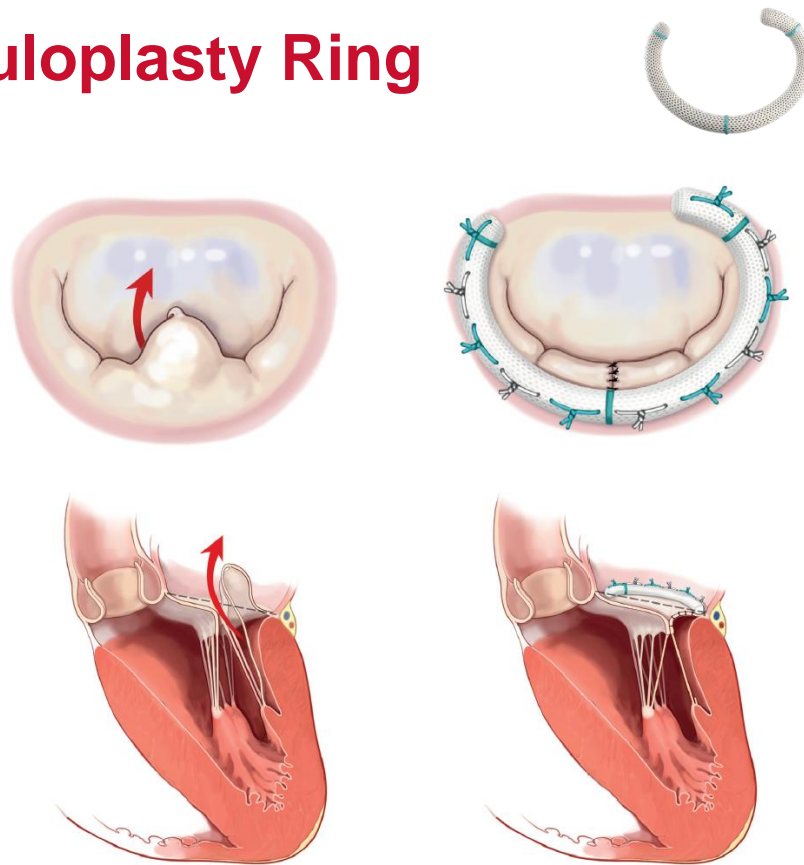
Edwards

# Introducing Physio Flex Annuloplasty Ring

- **When:**  
You want a semi-rigid ring, with  
an open anterior segment



The Physio Flex ring design was developed with the strong collaboration between Edwards Lifesciences and mitral repair experts, including key contributions from Prof. Ruggero De Paulis and Dr. David Adams.

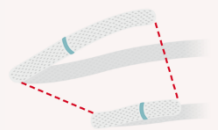


Procedure illustration adapted from Carpentier, et al. Elsevier, 2010

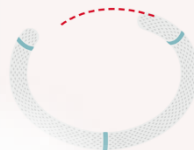
# Introducing Physio Flex Annuloplasty Ring



## Shape

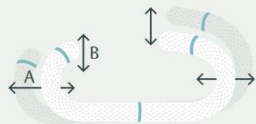


Progressive saddle height with a complete posterior saddle and an open anterior saddle



Open anterior segment corresponding to the aorto-mitral curtain

## Flexibility

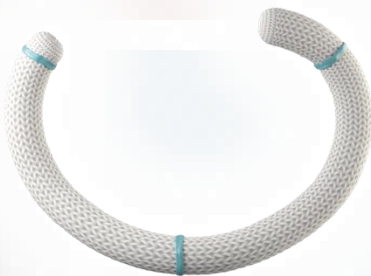


Designed with different flexibilities:

**(A)** Progressive in-plane flexibility in the smaller sizes\* and constant in larger sizes\*\*

**(B)** greater out-of-plane flexibility (than in-plane)

\* size 24 to 30 mm; \*\* size 30 to 40 mm



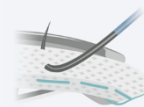
## Implantability



Commissure and mid-posterior markers



Single-cut release, bendable holder

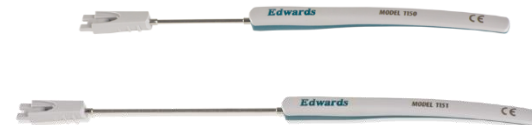
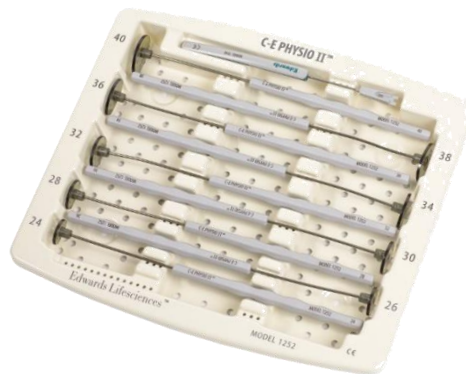


Dedicated sewing cuff and identified suture zone

# Physio Flex Ring

## Model Numbers & Compatible Accessories

Model Number	Compatible Sizers / Tray <sup>*,**</sup>	Handles <sup>*,**</sup>
Model 5300, available in even sizes 24 mm - 40 mm	Sizer 1252/ Tray 1252	Reusable Bendable Handle 1150 Reusable Extended Handle 1151



\* **Caution:** Examine sizers and handles for signs of wear, such as dullness, cracking or crazing. Replace sizer and handles if any deterioration is observed

\*\* Refer to the accessories IFU (sizers, trays and handles) for Cleaning Instructions and Sterilization Instructions

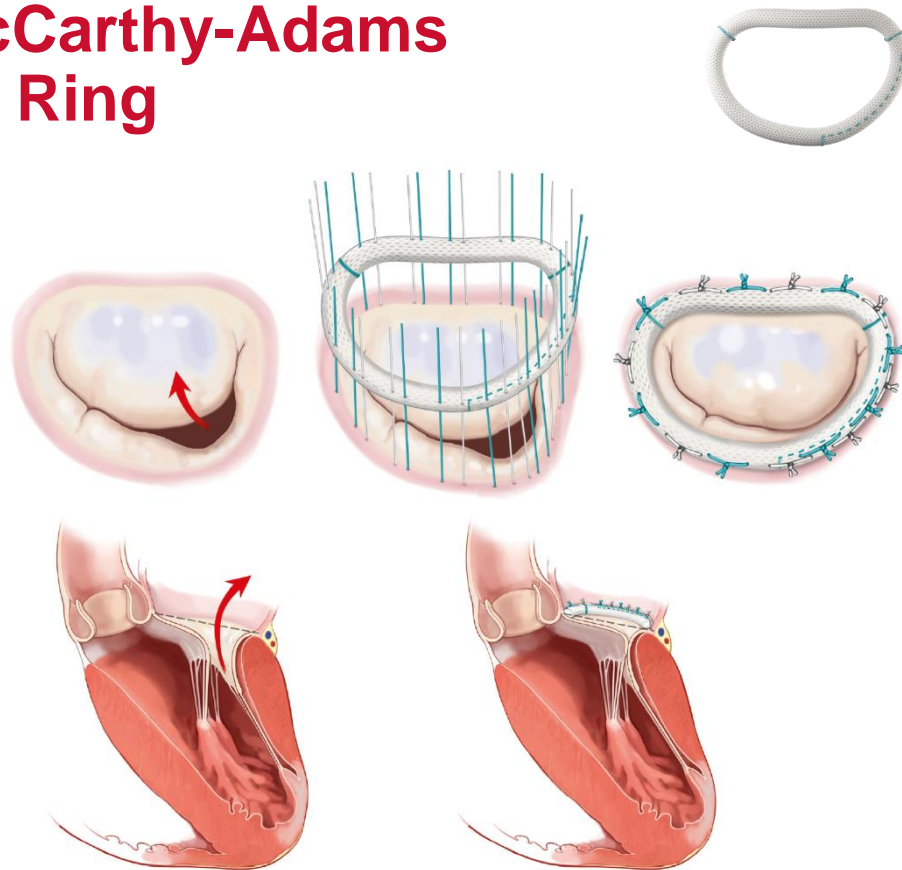
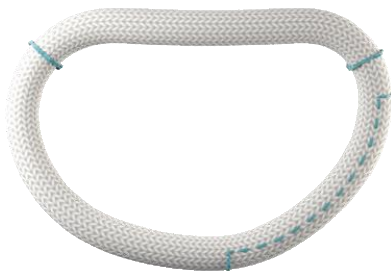
**Carpentier-McCarthy-Adams**  
**IMR ETlogix**  
Annuloplasty Ring



Edwards

# Introducing Carpentier-McCarthy-Adams IMR ETlogix Annuloplasty Ring

- **When:**  
You want a rigid, complete ring with an asymmetrical design

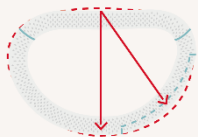




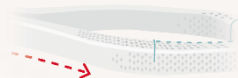
# Carpentier-McCarthy-Adams IMR ETlogix Annuloplasty Ring



## Shape

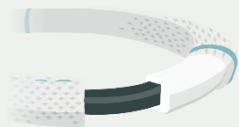


Asymmetrical design,  
e.g. P2/P3 segment



Dipped P3 segment

## Flexibility



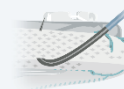
Rigid ring



## Implantability



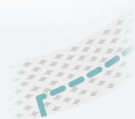
Commissure  
markers



Dedicated  
sewing zone



Three-cut  
release holder



P2/P3 segment has  
increased sewing  
margin marked with a  
dashed suture line

# Carpentier-McCarthy-Adams IMR ETlogix Annuloplasty Ring Model Numbers & Compatible Accessories

Model Number	Compatible Sizers / Tray <sup>*,**</sup>	Handles <sup>*,**</sup>
Model 4100, available in even sizes 26 mm - 34 mm	Sizer 1174/ Tray 1174	Reusable Bendable Handle 1150 Reusable sizer handle 1111



\* **Caution:** Examine sizers and handles for signs of wear, such as dullness, cracking or crazing. Replace sizer and handles if any deterioration is observed

\*\* Refer to the accessories IFU (sizers, trays and handles) for Cleaning Instructions and Sterilization Instructions

# **Cosgrove-Edwards**

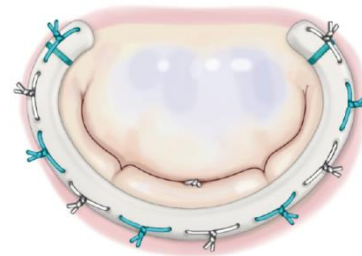
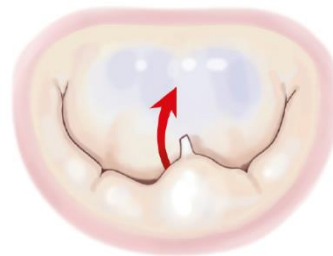
## Annuloplasty System



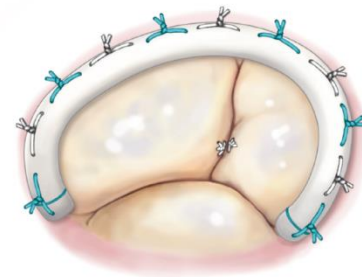
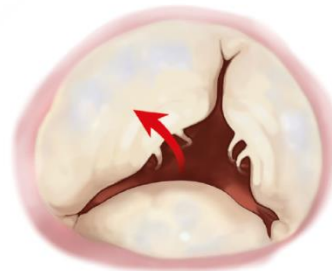
Edwards

# Introducing Cosgrove-Edwards Annuloplasty System

- **When:**  
You want a flexible, partial band



Procedure illustration adapted from Koprivanac, et al.  
Annals of cardiothoracic surgery, 2017 Jan;6(1):38.



Procedure illustration adapted from Boyd, et al.  
Annals of cardiothoracic surgery, 2017 May;6(3):248.

# Introducing Cosgrove-Edwards Annuloplasty System



## Shape



Open design in the anterior portion of the mitral valve and the septal portion of the tricuspid valve

## Flexibility



Conforms to the annular shape while providing support against recurrent dilation



Fully flexible band

## Implantability



Commissure markers



Unique template and lanyard design



Three-cut release holder

# Cosgrove-Edwards Annuloplasty System

## Model Numbers & Compatible Accessories

Model Number	Compatible Sizers / Tray <sup>*,**</sup>	Handles <sup>*,**</sup>
Model 4600, available in even sizes 26 mm - 38 mm	Mitral sizer 1174/ Tray 1174 Tricuspid sizer 1175/ Tray 1175	Reusable Bendable Handle 1150 Reusable sizer handle 1111



\* **Caution:** Examine sizers and handles for signs of wear, such as dullness, cracking or crazing. Replace sizer and handles if any deterioration is observed

\*\* Refer to the accessories IFU (sizers, trays and handles) for Cleaning Instructions and Sterilization Instructions

# **Carpentier-Edwards Physio Tricuspid**

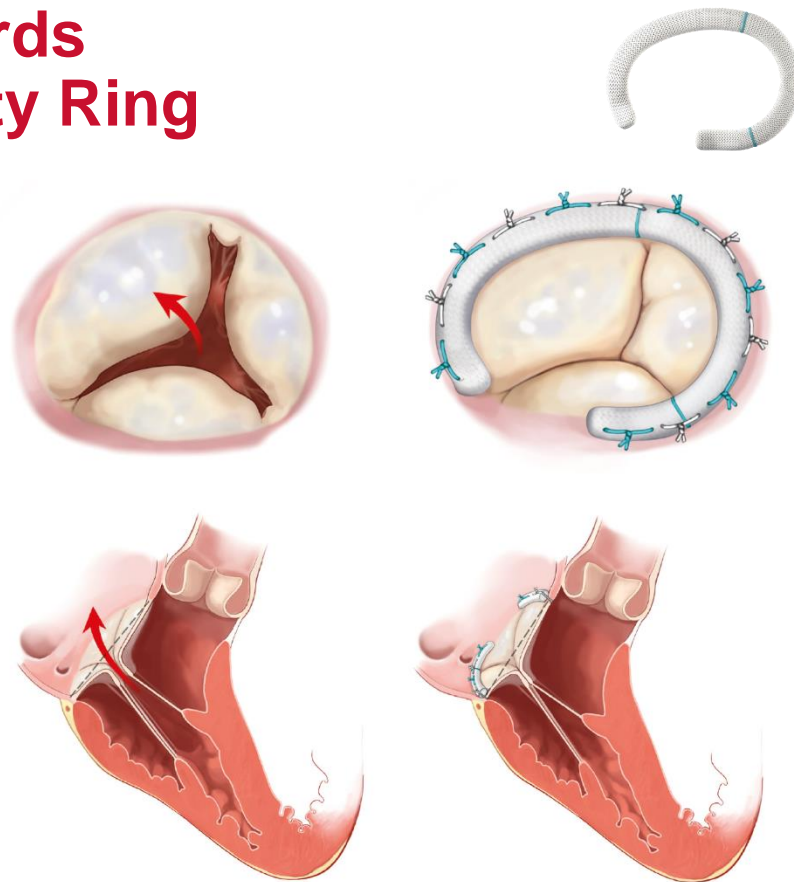
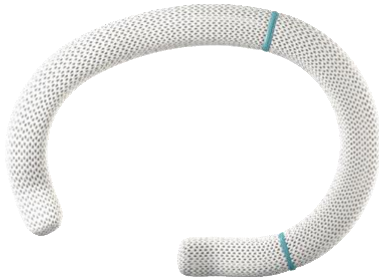
## Annuloplasty Ring



Edwards

# Introducing Carpentier-Edwards Physio Tricuspid Annuloplasty Ring

- **When:**  
You want a semi-rigid, partial ring





# Introducing Carpentier-Edwards Physio Tricuspid Annuloplasty Ring



## Shape



3D waveform contour while maintaining support of the tricuspid annulus to prevent excessive dilatation



Open segment around anterosseptal commissure to avoid conduction system

## Flexibility



Selective flexibility to adapt to the complex motion of annulus



## Implantability



Commissure markers



Single-cut release holder

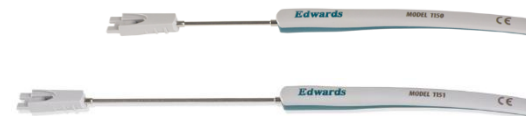
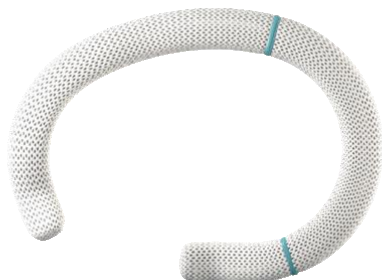


Dedicated sewing cuff and identified suture zone

# Carpentier-Edwards Physio Tricuspid Annuloplasty Ring

## Model Numbers & Compatible Accessories

Model Number	Compatible Sizers / Tray <sup>*,**</sup>	Handles <sup>*,**</sup>
Model 6200, available in even sizes 26 mm - 34 mm	Sizer 1262/ Tray 1262	Reusable Bendable Handle 1150 Reusable Extended Handle 1151



\* **Caution:** Examine sizers and handles for signs of wear, such as dullness, cracking or crazing. Replace sizer and handles if any deterioration is observed

\*\* Refer to the accessories IFU (sizers, trays and handles) for Cleaning Instructions and Sterilization Instructions

# Edwards MC3

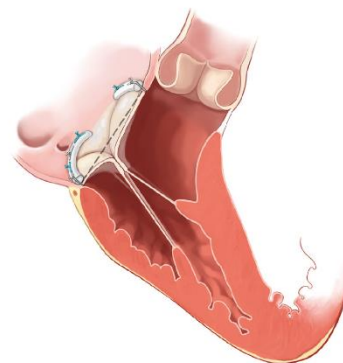
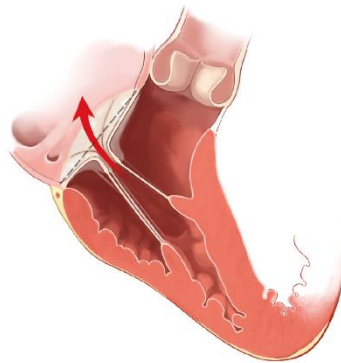
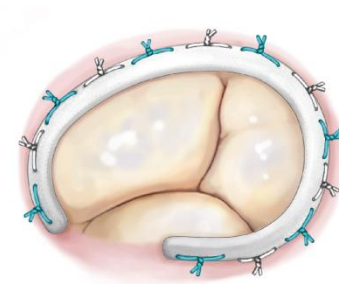
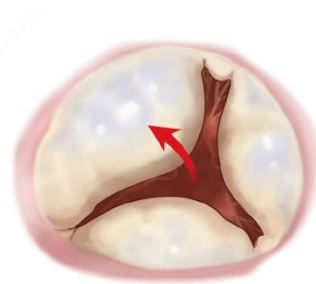
Tricuspid Annuloplasty Ring



Edwards

# Introducing Edwards MC3 Tricuspid Annuloplasty Ring

- **When:**  
You want a rigid, partial ring



Procedure illustration adapted from Carpentier, et al. Elsevier, 2010

# Introducing Edwards MC3 Tricuspid Annuloplasty Ring



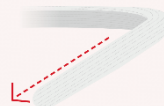
## Shape



Shape mimics tricuspid annulus

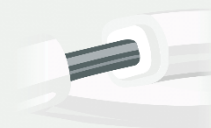


Open at the antero-septal commissure



Downward angle in septal region

## Flexibility



Rigid ring



## Implantability



Unique template and lanyard design



Three-cut release holder

# Edwards MC3 Tricuspid Annuloplasty Ring Model Numbers & Compatible Accessories

Model Number	Compatible Sizers / Tray <sup>*,**</sup>	Handles <sup>*,**</sup>
Model 4900, available in even sizes 26 mm - 36 mm	Sizer 1175/ Tray 1175	Reusable Bendable Handle 1150 Reusable sizer handle 1111



\* **Caution:** Examine sizers and handles for signs of wear, such as dullness, cracking or crazing. Replace sizer and handles if any deterioration is observed

\*\* Refer to the accessories IFU (sizers, trays and handles) for Cleaning Instructions and Sterilization Instructions

# Thank you

**For professional use. For a listing of indications, contraindications, precautions, warnings, and potential adverse events, please refer to the Instructions for Use (consult [eifu.edwards.com](http://eifu.edwards.com) where applicable).**

Edwards devices placed on the European market meeting the essential requirements referred to in Article 3 of the Medical Device Directive 93/42/EEC bear the CE marking of conformity.

Edwards, Edwards Lifesciences, the stylized E logo, Carpentier-Edwards, Carpentier-Edwards Physio, Carpentier-Edwards Physio II, Carpentier-McCarthy-Adams IMR ETlogix, Cosgrove-Edwards, Edwards MC3, IMR ETlogix, Physio, Physio II, Physio Tricuspid and Physio Flex are trademarks or service marks of Edwards Lifesciences or its affiliates. All other trademarks are the property of their respective owners.

© 2021 Edwards Lifesciences Corporation. All rights reserved. PP--EU-2570 v1.0

**Edwards Lifesciences** • Route de l'Etraz 70, 1260 Nyon, Switzerland • [edwards.com](http://edwards.com)



Edwards



Edwards